

EXTRABEND®

Anti-Wear Pipe Elbows



LIGHTWEIGHT AND DURABLE FLOW DIVERSION

EXTRABEND® is a compact, short-radius anti-wear pipe elbow designed for seamless integration into pneumatic conveying systems.

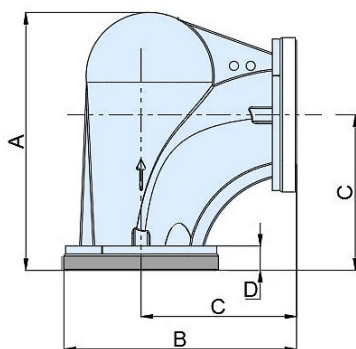
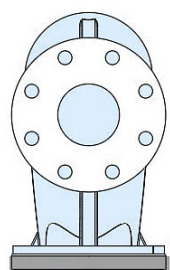
Its unique geometry minimises wear by creating a dead zone at the diversion point, allowing material to change direction smoothly. The body cavity near this point generates internal turbulence, effectively shielding the elbow from abrasion caused by the conveyed material.

Technical Features

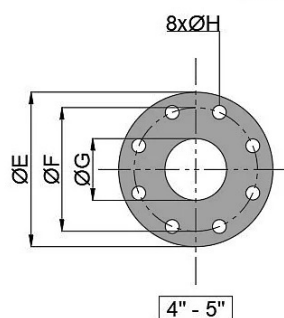
- Different qualities of SINT® engineering polymer available for handling plastic pellets, granules, sand or fine, abrasive, or chemically highly aggressive powders. A food-grade version is available.
- EXTRABEND® 90° Diameter: 2" - 3" - 4" - 5"
- EXTRABEND® 45° Diameter: 2" - 3" - 4"
- Operating pressure: -0.5 bar ~ 1.5 bar
- Working temperature: -20°C ~ +70°C
- PN-type connecting flanges

Overall Dimensions

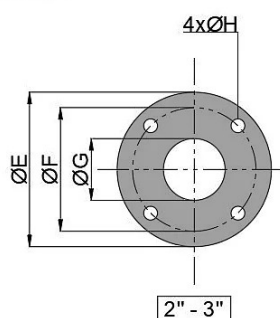
EB 90°



INLET FLANGE

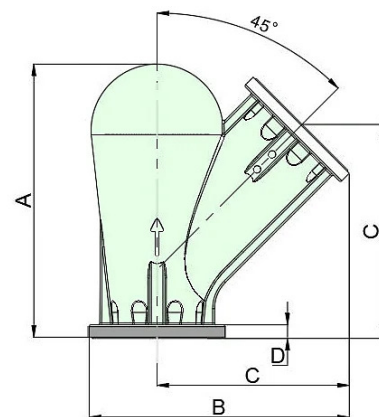
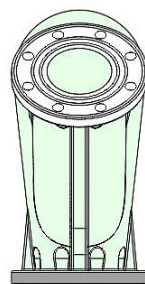


4" - 5"

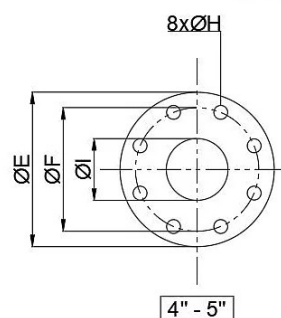


2" - 3"

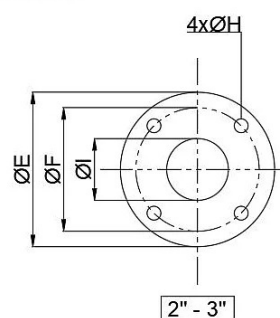
EB 45°



OUTLET FLANGE



4" - 5"

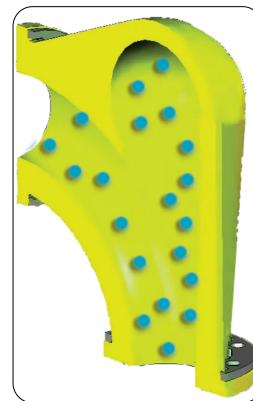
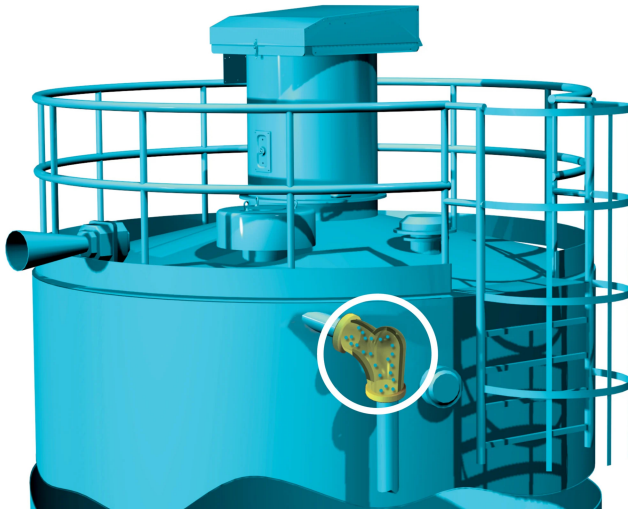


2" - 3"

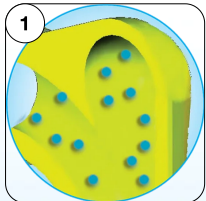
TYPE	Ø Piping	A	B	C	D	ØE	ØF	ØG	ØH	ØI	kg
EB2 90°	2"	230	220	138	23	165	125	55	4 x Ø18	52	4
EB3 90°	3"	330	300	200	30	200	160	85		80	7
EB4 90°	4"	453	373	263		220	180	108	8 x Ø18	105	11
EB5 90°	5"	543	453	328	37	250	210	133		130	23
EB2 45°	2"	245	275	192	25	165	125	55	4 x Ø18	52	4
EB3 45°	3"	339	351	257	32	200	160	85		80	7
EB4 45°	4"	444	421	332		220	180	108	8 x Ø18	105	11

Benefits

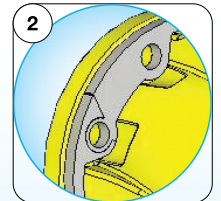
- ✓ Elasticity of SINT® ensures conveying of material without particle breakdown, grinding or jamming
- ✓ Low cost for installation, pipeline support and installation thanks to compact design
- ✓ Durability ensures low maintenance costs
- ✓ Lightweight and durable
- ✓ Flexibility and adaptability contributing to reduced installation costs
- ✓ Ex-stock delivery
- ✓ Reduced noise level



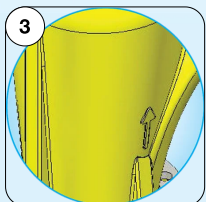
Cutaway view



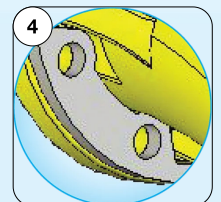
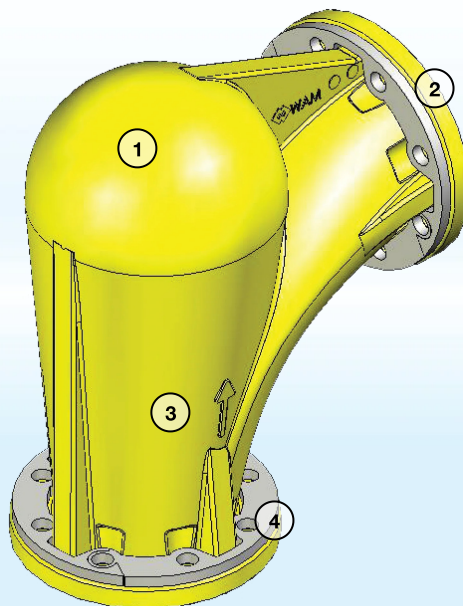
Deflection Zone



Flanges



Body



Semi-Flanges

Option

- Food-grade version

Industries



Plastics Processing



Building & Construction

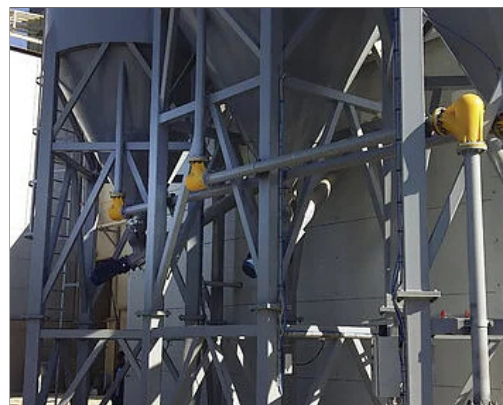
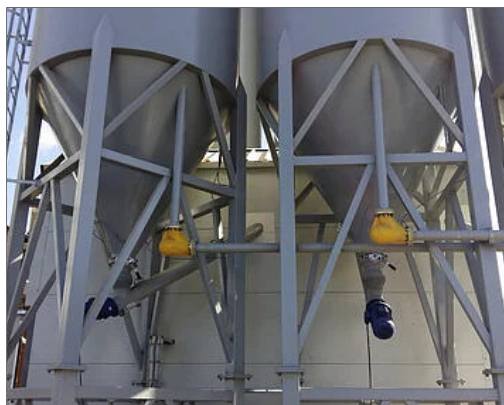


Heavy Industries



Feed & Food

Application



WAMGROUP®



WAM®



MAP®



TOREX®



EXTRAC®



WAM® AIR



WAM® VALVES



SILOFAB



SAVECO®



TOREX®



UNI EN ISO 9001
Certified Company

www.wamgroup.com